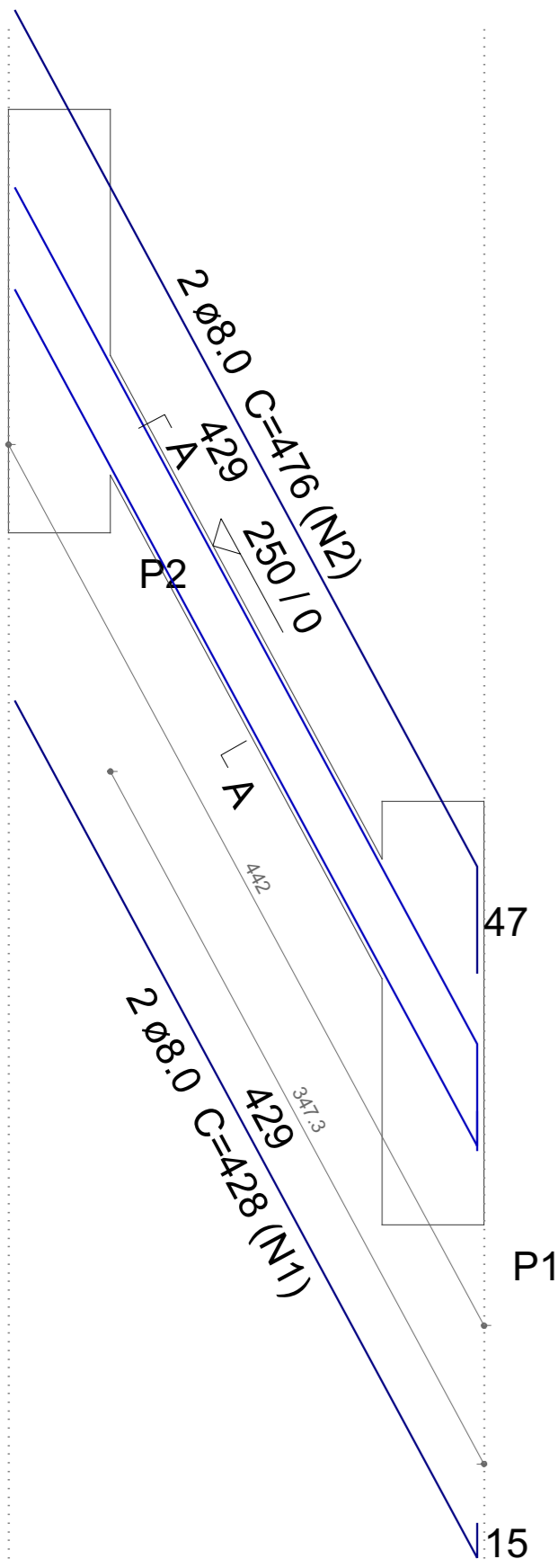


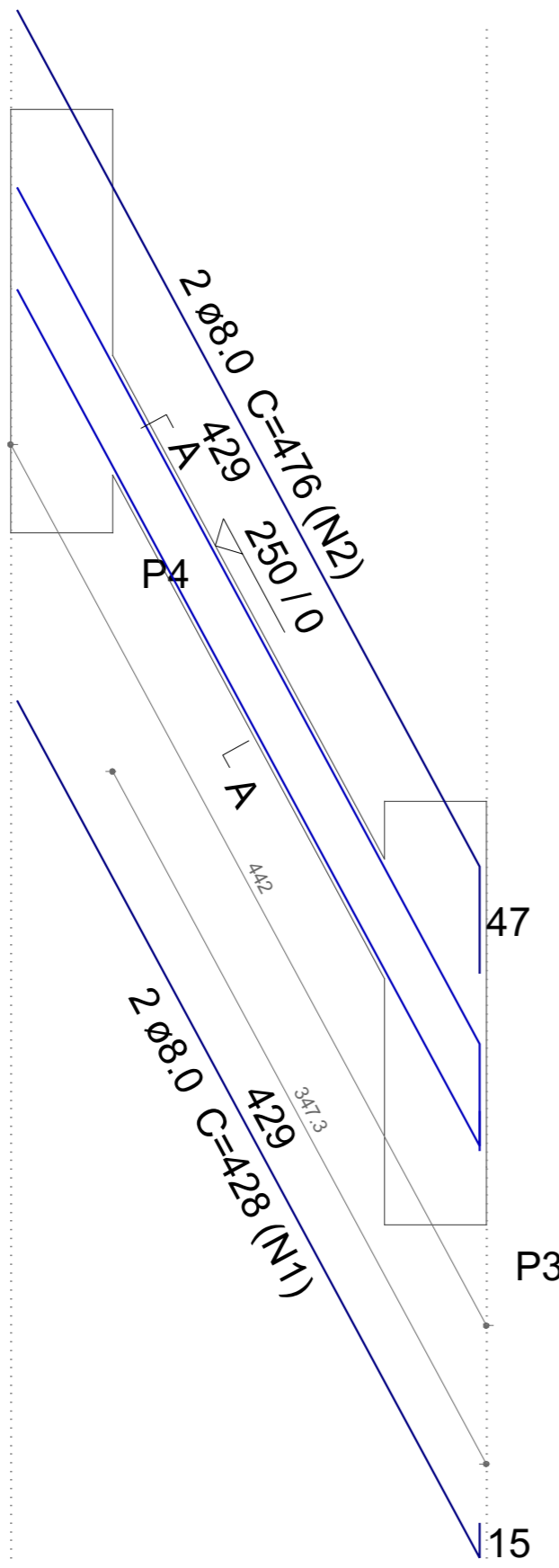
V3

ESC 1:30



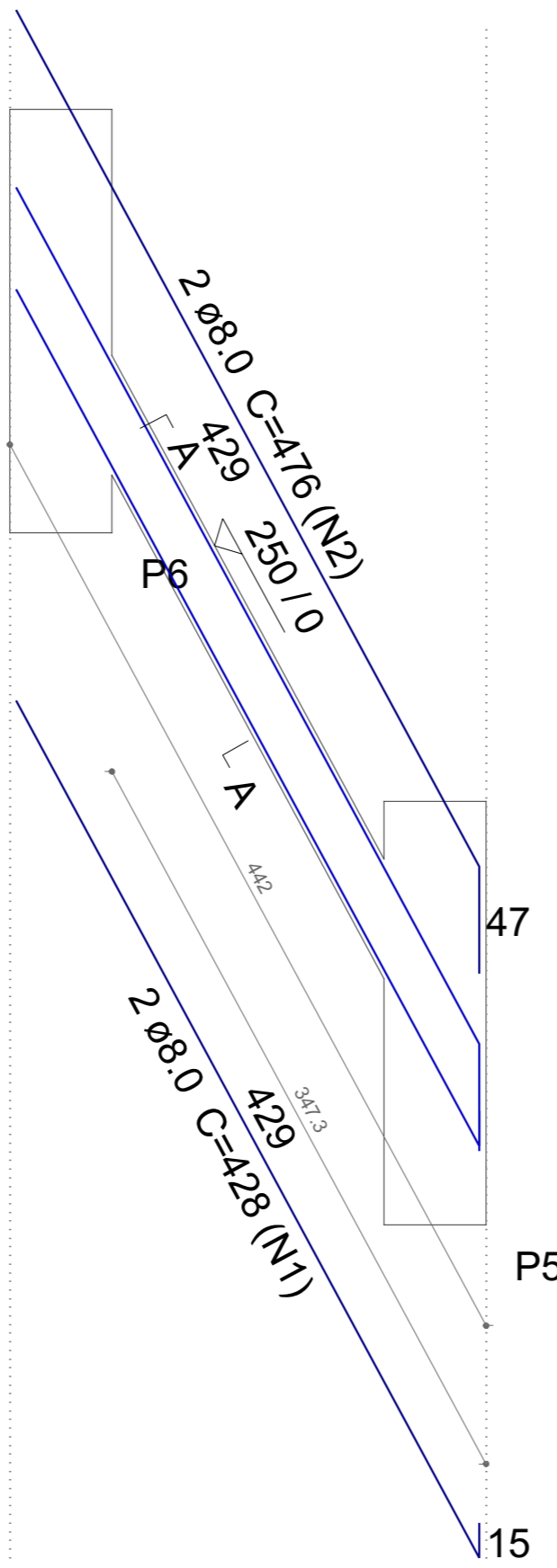
V4

ESC 1:30



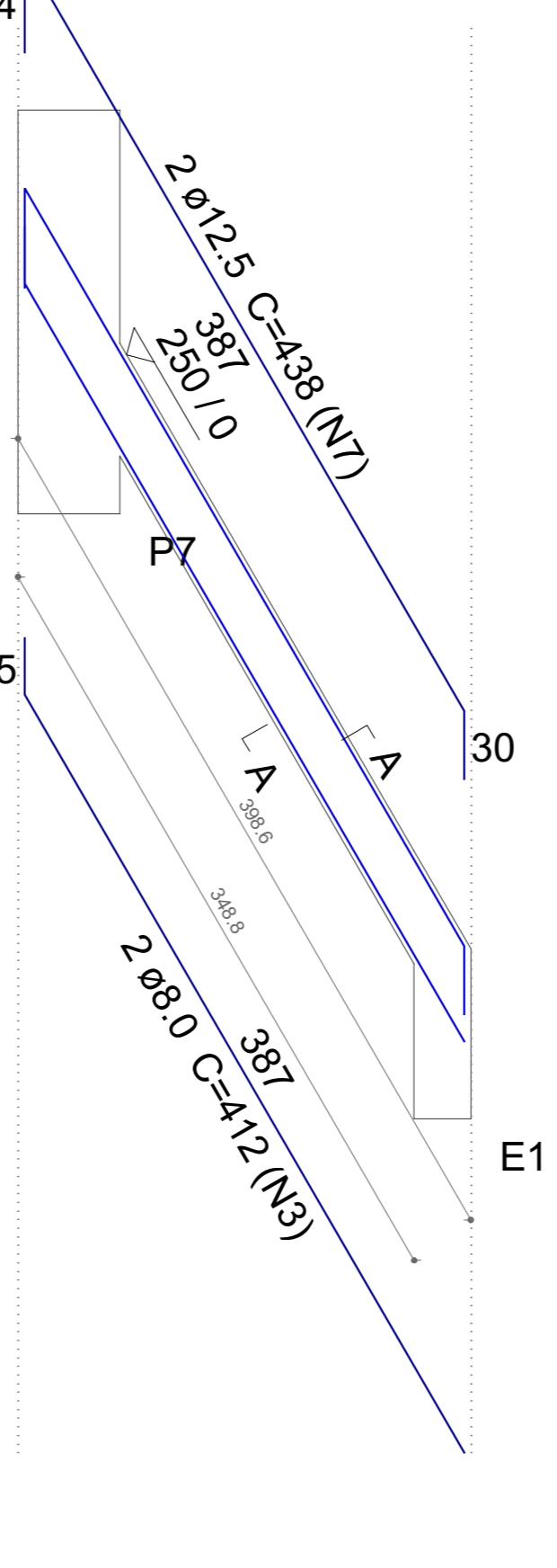
V5

ESC 1:30



V6

ESC 1:30



Relação do aço

AÇO	N	DIAM (mm)	QUANT	C.UNIT (cm)	C.TOTAL (cm)
CA50	1	8.0	6	428	2568
	2	8.0	6	476	2856
	3	8.0	2	412	824
	4	8.0	6	414	2484
	5	8.0	2	402	804
	6	8.0	2	438	876
	7	12.5	2	438	876
	8	12.5	4	440	1760
	9	12.5	2	439	878

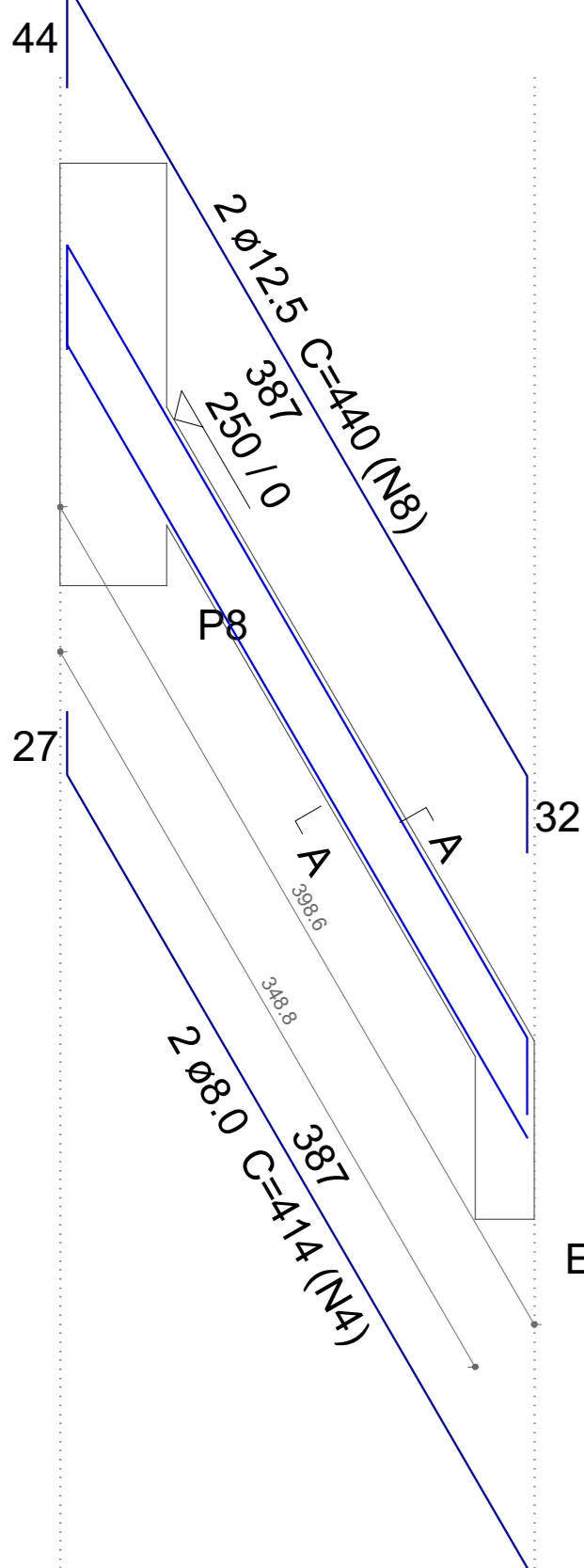
Resumo do aço

AÇO	DIAM (mm)	C.TOTAL (m)	PESO + 10 % (kg)
CA50	8.0	104.2	45.2
	12.5	35.2	37.2
PESO TOTAL (kg)			
CA50	82.4		

Volume de concreto (C-30) = 0.84 m³
Área de forma = 14.57 m²

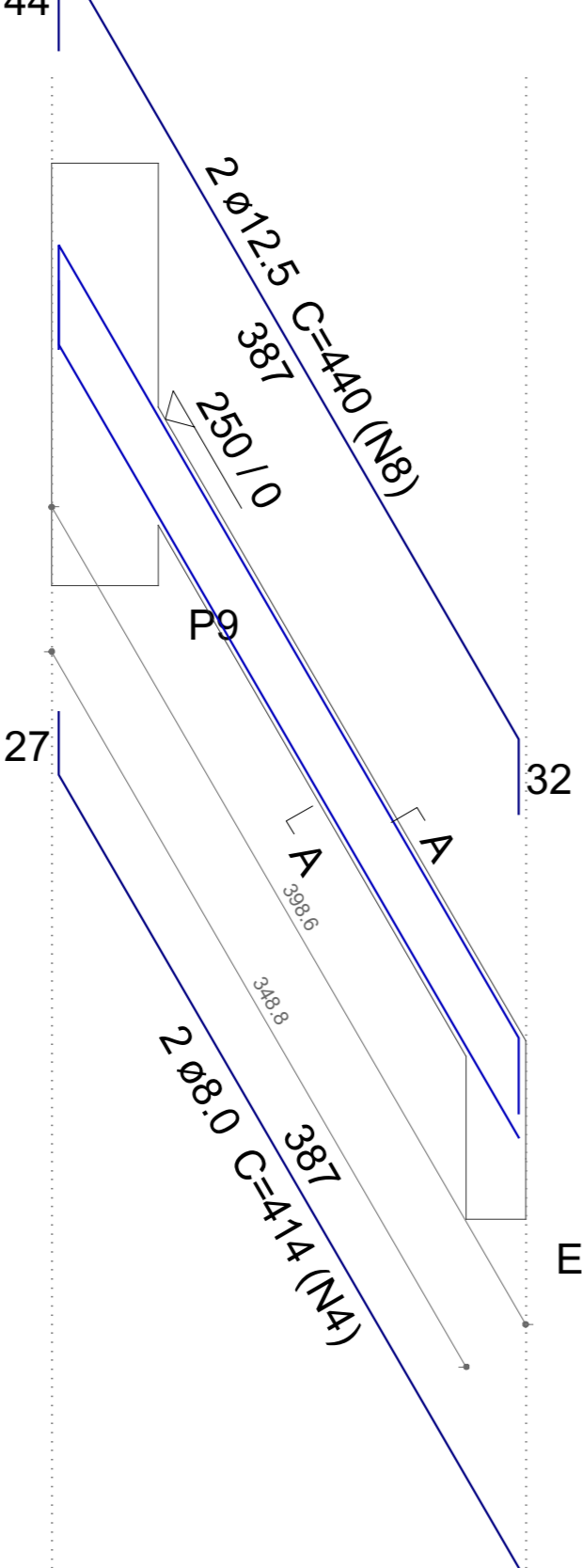
V7

ESC 1:30



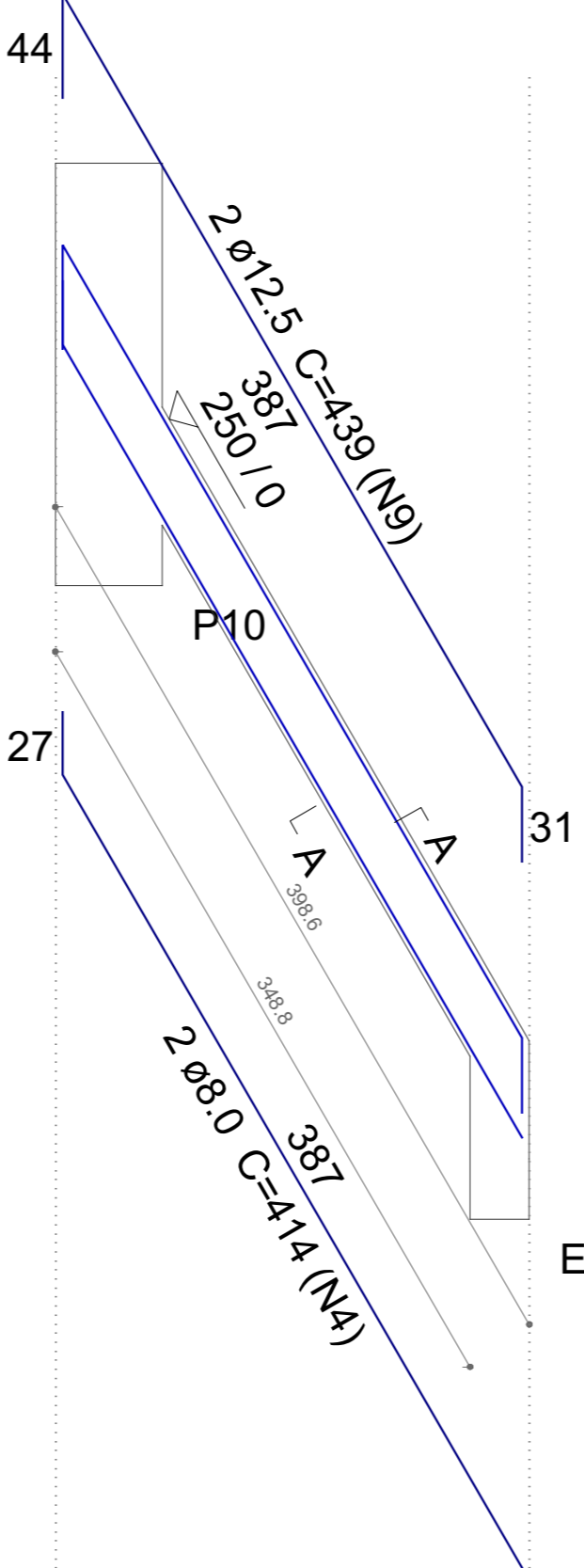
V8

ESC 1:30



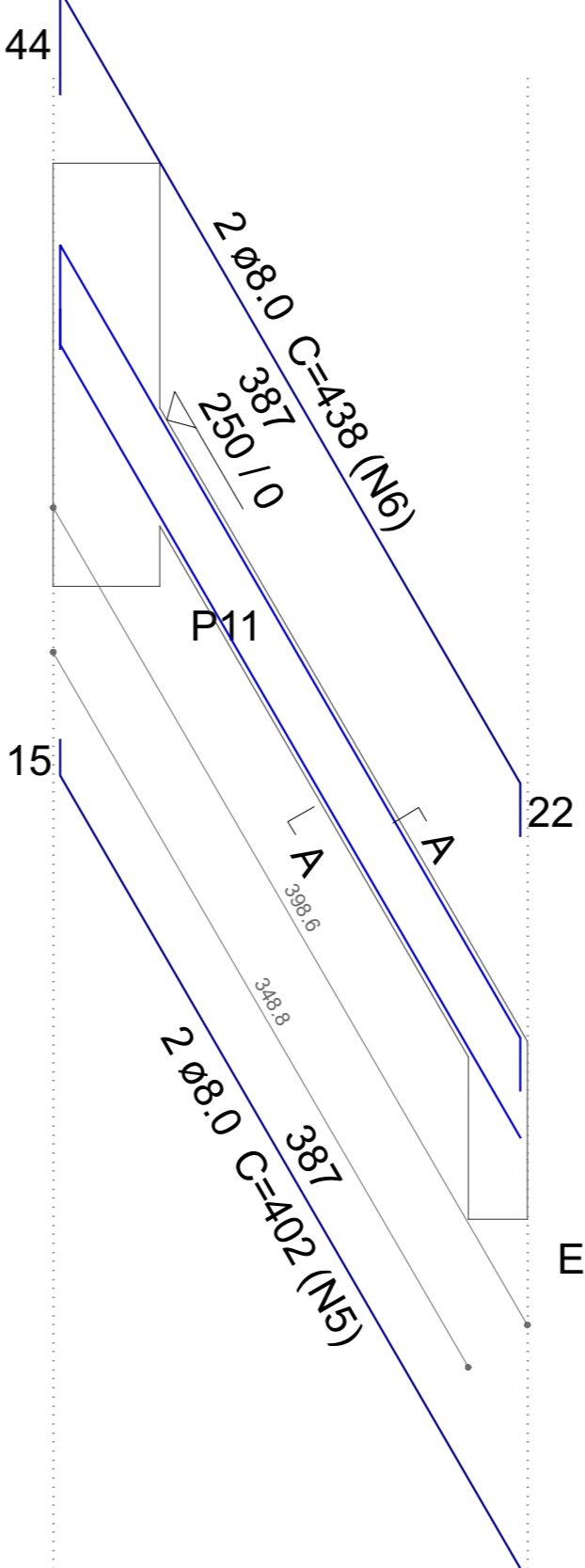
V9

ESC 1:30



V10

ESC 1:30



ESTATÍSTICA DA OBRA:

Finalidade da obra:



GESTÃO 2021/2024

Obra: USF - Dr. Carlos Felipe de Sio

Local:

LAR. DO SUL/Pr

Endereço da obra:

Rua Barão do Rio Branco

Folha:

3/7

Escala:

INDICADA

Data:

Desenho:

WANDER

Proprietário:

PREF. MUN. DE LARANJEIRAS DO SUL
CNPJ. 76.205.970/0001-95
AV. HONÓRIO BABINSKI - PAÇO MUNICIPAL Nº 01
CEP. 85301-000 FONE (042) 3635-8100
LARANJEIRAS DO SUL/PR

Últimas Atualizações:

MÃO-FRANCESA

Detalhamento de vigas inclinadas

Resp. p/ Projeto:

LEONI LUIZ MELETTI
CREA-PR 9.990/D

